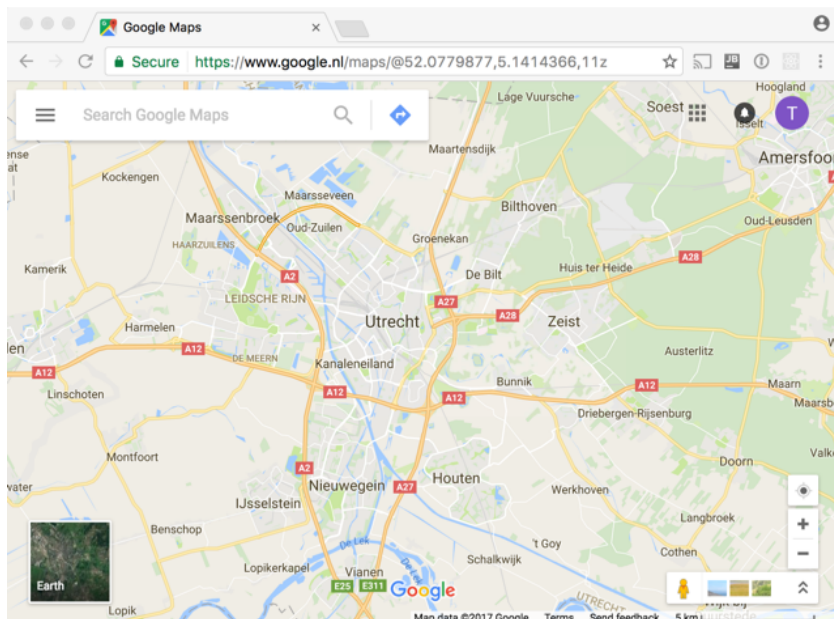
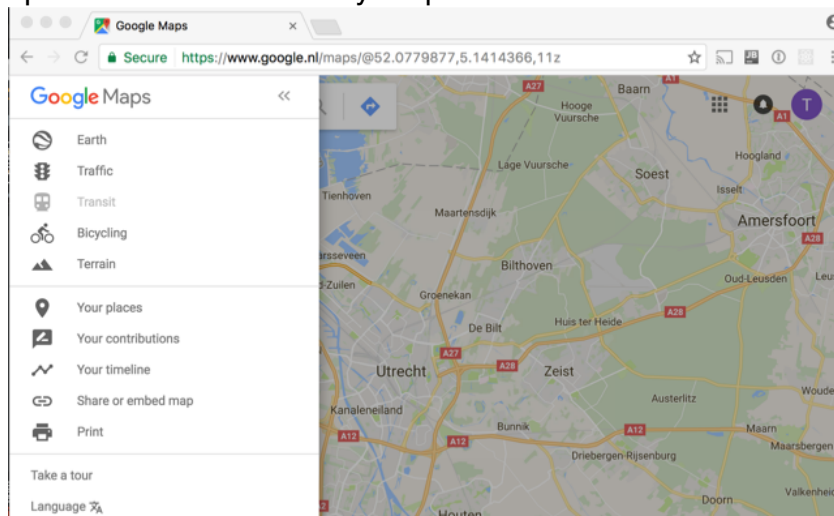


Create a route with google maps and import it into the ergometer space maps widget

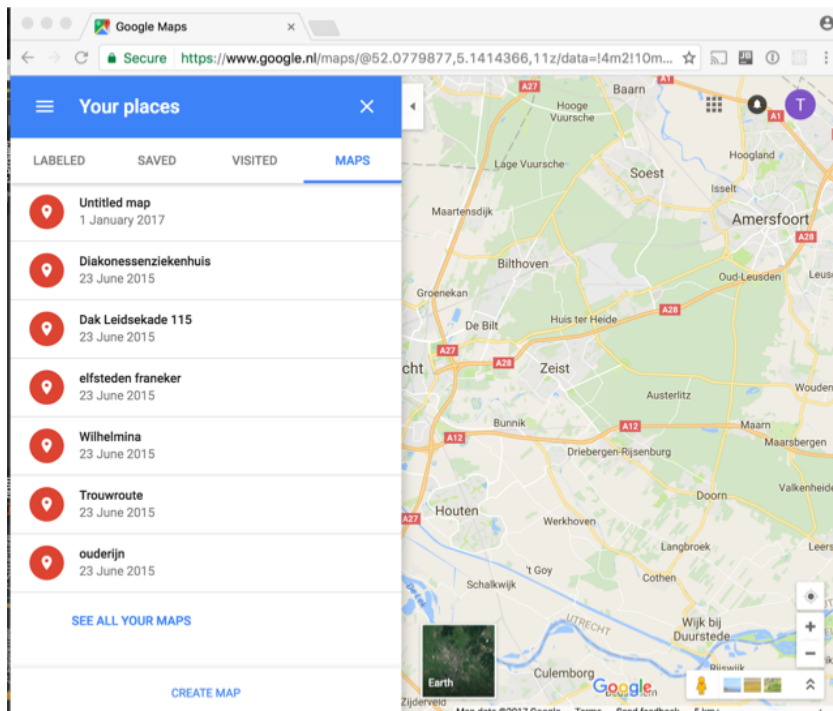
First start google maps and make sure that you are logged in into google



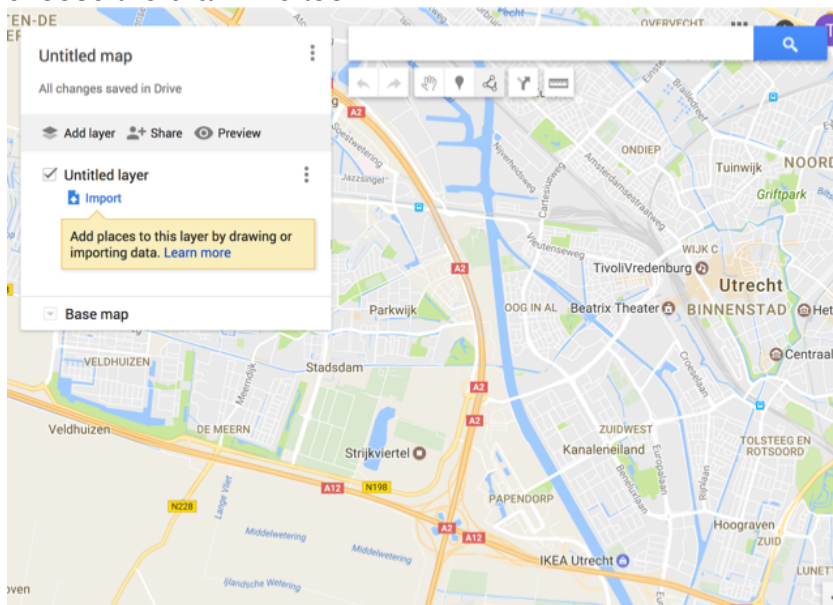
open the menu and start your places



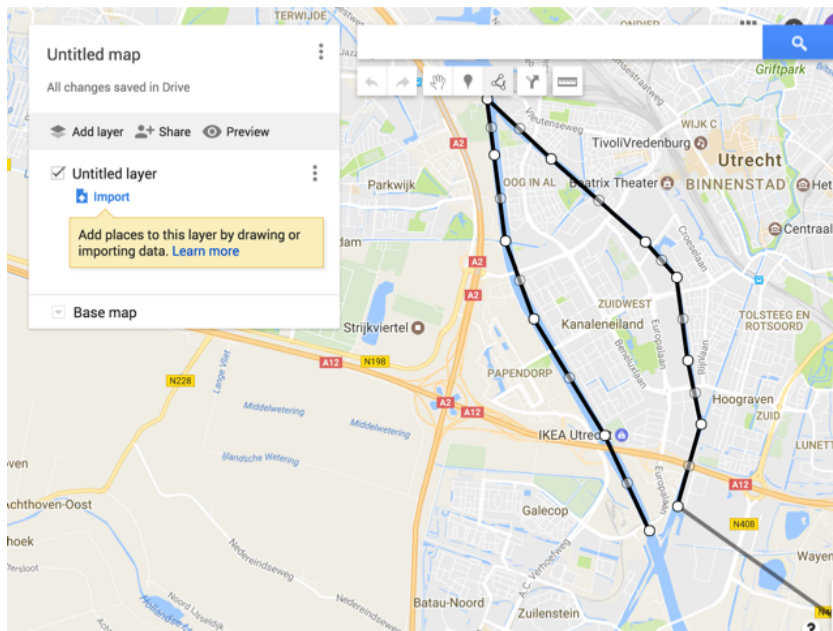
goto maps and choose create map



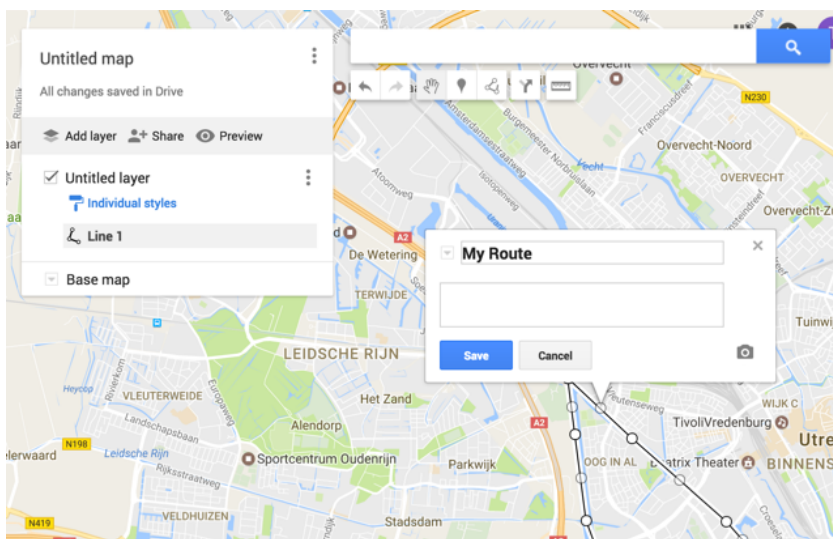
choose the draw line tool



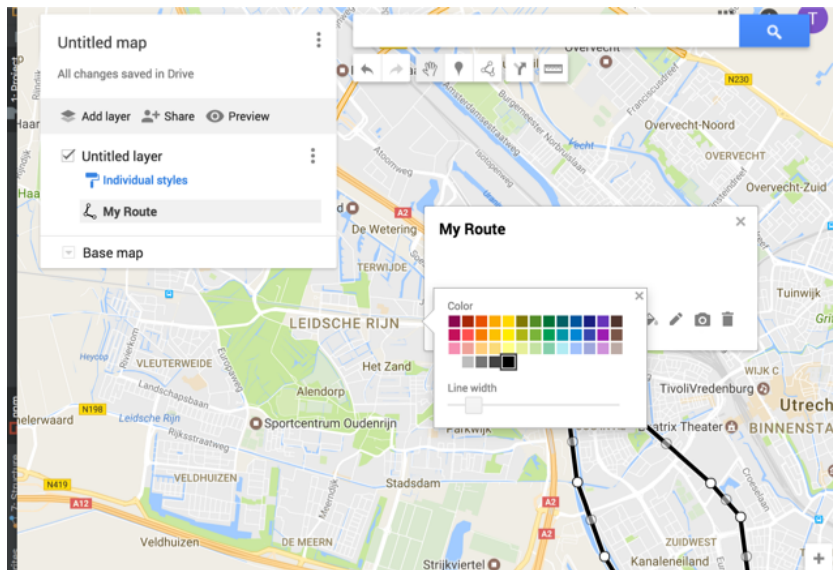
Draw a route. It must sinle set a set of connected lines. Just click on the points where you want the line.  
the application does not support closed lines. Just let the end point stop close to the start point if you want a round track.



Double click on the last point . a dialog opens , give the route a name and save.

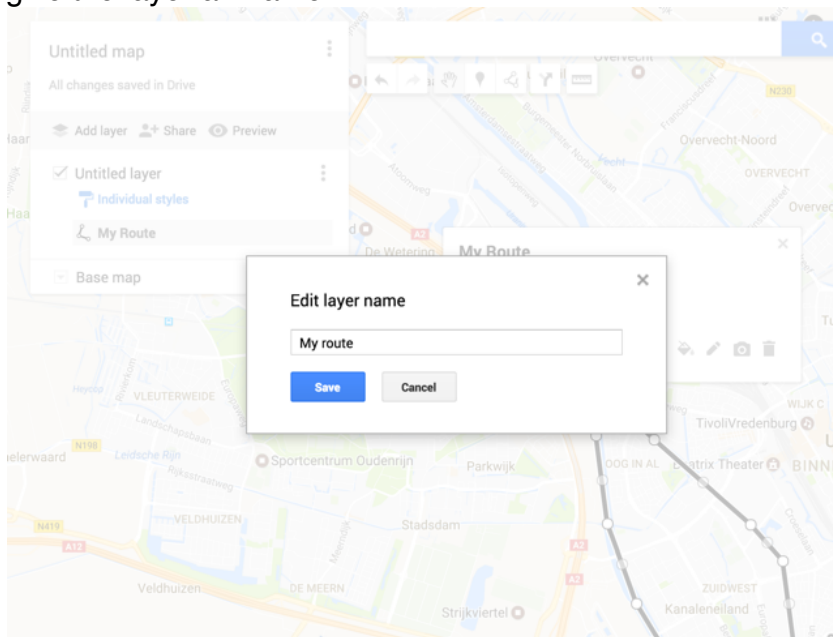


click on the style and increase the line width



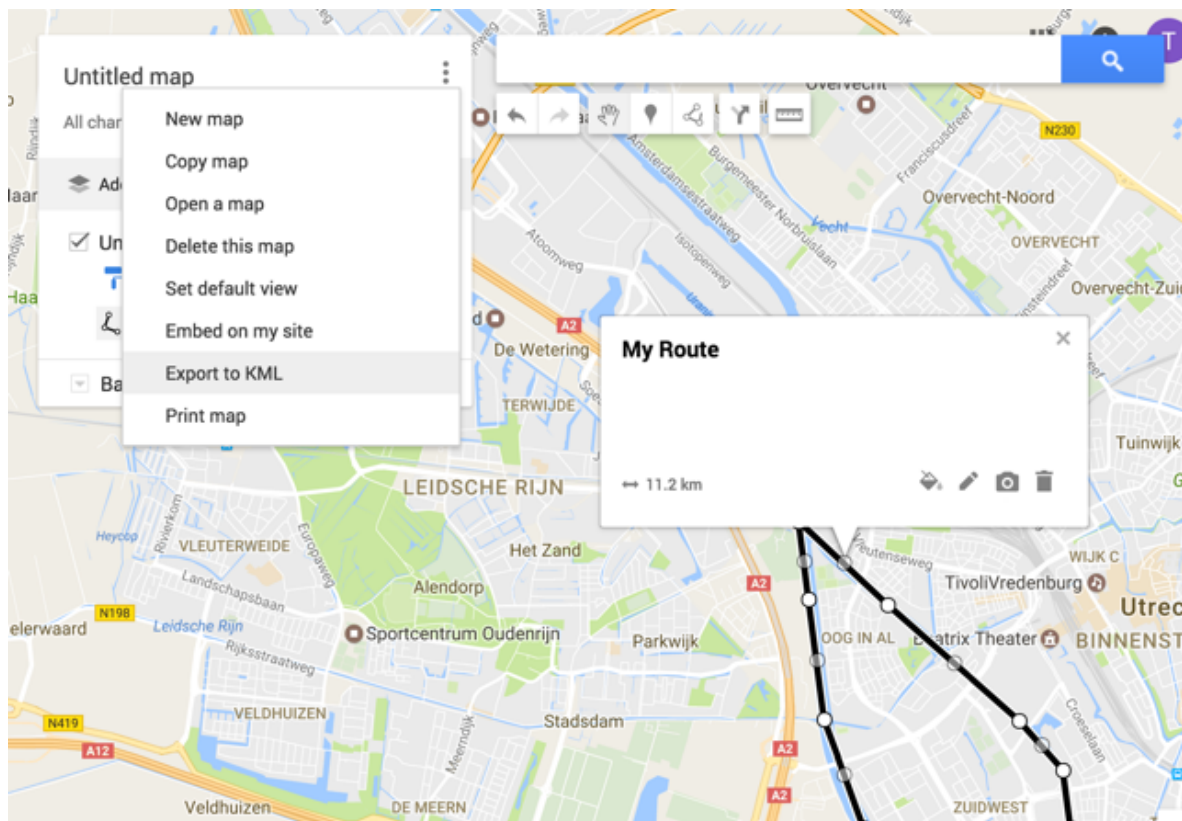
Open the menu on the the untitled layer and chose rename layer

give the layer an name



open the top menu and choose export to KML





Choose the layer name which you have given  
Check the checkbox export to a .KML file

then press download

now you have a file which looks like this:

```
<?xml version='1.0' encoding='UTF-8'?>
<kml xmlns="http://www.opengis.net/kml/2.2">
  <Document>
    <name>My route</name>
    <Placemark>
      <name>My Route</name>
      <styleUrl>#line-000000-4-nodesc</styleUrl>
      <LineString>
        <tessellate>1</tessellate>
        <coordinates>5.104351,52.0521738,0.0
5.0967979,52.0620955,0.0 5.0847816,52.0742308,0.0 5.0799751,52.0823543,0.0
5.0780869,52.0913202,0.0 5.0768852,52.0971206,0.0 5.0876999,52.0908983,0.0
5.1036644,52.0822489,0.0 5.1089859,52.0785565,0.0 5.1108742,52.0699047,0.0
5.1131058,52.0632564,0.0 5.1091576,52.0547072,0.0</coordinates>
      </LineString>
    </Placemark>
    <Style id='line-000000-4-nodesc-normal'>
      <LineStyle>
        <color>ff000000</color>
        <width>4</width>
```

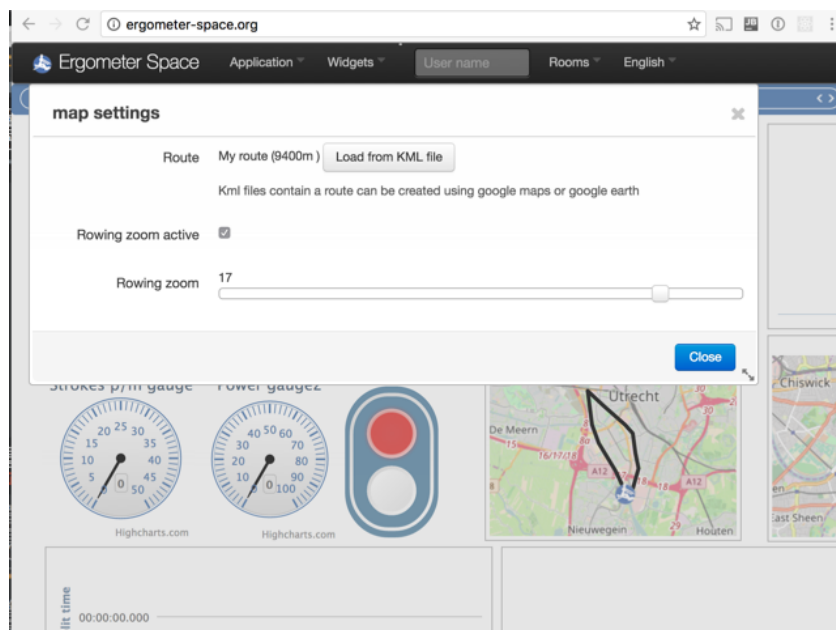
```

</LineStyle>
<BalloonStyle>
  <text><![CDATA[<h3>${name}</h3>]]></text>
</BalloonStyle>
</Style>
<Style id='line-000000-4-nodesc-highlight'>
  <LineStyle>
    <color>ff000000</color>
    <width>6.0</width>
  </LineStyle>
  <BalloonStyle>
    <text><![CDATA[<h3>${name}</h3>]]></text>
  </BalloonStyle>
</Style>
<StyleMap id='line-000000-4-nodesc'>
  <Pair>
    <key>normal</key>
    <styleUrl>#line-000000-4-nodesc-normal</styleUrl>
  </Pair>
  <Pair>
    <key>highlight</key>
    <styleUrl>#line-000000-4-nodesc-highlight</styleUrl>
  </Pair>
</StyleMap>
</Document>
</kml>

```

go to the ergometer space and click on the tool button on the map plugin

Click on load file



Now the route looks like this:

